



Sharpen your competitive edge  
**2016 IMS Technical Symposium**  
March 7 - 10, 2016  
Wiesbaden, Germany

[www.ims-symposium.com](http://www.ims-symposium.com)

# Conference Guide



## What's Inside

<b>Welcome to Wiesbaden</b>	<b>3</b>
<b>Conference at a Glance</b>	<b>4</b>
<b>Sessions</b>	<b>7 - 15</b>
<b>Customer Speakers</b>	<b>20</b>
<b>Vendor Speakers</b>	<b>21</b>
<b>IBM &amp; Partner Speakers</b>	<b>22</b>
<b>Exhibitors and Sponsors, Expo Hours</b>	<b>31</b>
<b>How to Download</b>	<b>37</b>



## Welcome to Wiesbaden!



Once more it's my pleasure to welcome you to our 2016 IBM IMS Technical Symposium, the worldwide biggest IMS conference in this great location at Wiesbaden, Germany! During the next 4 days you can expect to get all news about IMS, the new IMS Version 14 and about IMS solutions and tools and across the broad enterprise ecosystem where IMS plays an essential and central role.

Our best and most experienced subject matter experts will be there for you and share all the news and their knowledge with you. IBM's business partners, vendors and our IMS clients will be delivering a huge set of technical sessions and extensive hands on labs and demos. Our agenda covers again a wide range of topics, from IMS to Tools to Solutions; from Analytics to the newest z13; from Mobile to the cloud and beyond. Our keynote sessions from the executives and senior technical leaders will give you excellent overview as well as deep insights. We strongly believe that our IMS strategy supports the strategies and challenges of your business.

Welcome to our growing Expo and LabZone! Take the chance to talk to all experts and representatives about the news, the trends and the latest solutions. Take the chance to participate in our labs, the perfect way to experience and get in touch with our tools and solution packs.

I want to personally thank each of you for joining us at this 2016 event. My team and I look forward to meeting with each of you and learning how IBM and IMS can better understand your perspective and needs. Please let us know, please tell us and discuss with us whatever you need, what are your pain points and questions so we can make this year's Symposium again a successful and high valuable conference to you!

Finally, and most importantly, I want to thank you for your business. Among our IBM z Systems clients, our IMS customers, including you, continue to be among the most loyal and supportive customers in IBM's history. Let's have a great conference!

Barry Baker  
IMS Director

## Conference at a Glance

Monday, March 07	
	Arrivals and Hotel Check-in
	IMS CAC 9:00 to 12:00
11:30	Symposium Registration and Lunch
13:00	Intro and Welcome – Thomas and Henry
13:30	Keynote K01: IMS on IBM z Systems: The Driving Force behind Cloud, Mobile, and Analytics <i>Barry Baker, IBM IMS Director</i>
14:15	Welcome from IBM Germany <i>Lars Herrmann, System z Software Sales</i>
14:25	Keynote K02: Let IMS Open Doors for Your New Business Opportunities <i>Greg Vance, IMS STSM, and Janet LeBlanc, IMS Tools Strategist</i>
15:30	BREAK+ EXPO OPENS
16:00	A01 IMS Infrastructure matters - the HOW and WOW of innovative growth, simplified operations, and secure access <i>Suzie Wendler, IBM Washington System Center</i>
	B01 IBM z System Hardware - 2016 Technical Overview (Repeats in C15) <i>Walter Klaey, IBM Switzerland</i>
17:00	C01 Unleash the analytic power of your IMS data using IDAA <i>Timm Zimmermann, IMS Tools SME</i>
17:15	A02 IMS on IBM z Systems: Driving T2S Securities Settlement for Europe <i>Miguel Gallego, Banco de España</i>
	B02 BMC Expands their Products for IMS <i>David Schipper, BMC</i>
18:15	C02 A Data Definition Language for Multiple Database Types (Repeats in A16) <i>Greg Vance, IMS STSM</i>
Expo Welcome Toast & Snacks Dinner and Evening on your own	

Kxx Sessions – Room: Paris / London

Axx Sessions – Room: Paris

Bxx Sessions – Room: London

Cxx Sessions – Room: Prag

HOLx Sessions – Room: Foyer

Tuesday, March 08	
9:00	Keynote K03: IMS Vendor Introductions and IMS Tools Keynote <i>Janet LeBlanc, IMS Tools Strategist</i>
10:00	BREAK
10:15	A03 How z/OS Connect changes IMS performance ... <i>Rafael Avigad, IMS Tools SME</i>
	B03 A day in a life of an IMS application <i>Ralph Nuesse, Compuware</i>
	C03 OMEGAMON IMS – NEWS <i>Klaus Schunk, IBM Germany</i>
11:15	BREAK
11:30	A04 Self-service Cloud Provisioning made easy with z/OSMF... <i>Poonam Chitale, IMS Development</i>
	B04 IBM IMS Tools CAC (requires NDA) <i>Janet LeBlanc and others</i>
	C04 Database Encryption on z/OS (Repeats in C12) <i>Tom Hubbard, IMS Tools SME</i>
12:30	Lunch , EXPO
13:30	A05 The Ever-evolving Impacts of Cloud and Mobility on... <i>Suzie Wendler, IBM Washington System Center</i>
	B05 Real Time IMS to Big Data <i>Scott Quillicy, SQData</i>
	C05 IMS Connect for Enterprise Workloads <i>Rafael Avigad, IMS Tools SME</i>
14:30	BREAK
14:45	A06 IMS Connect: Much More Than a TCP/IP Gateway! <i>Suzie Wendler, IBM Washington System Center</i>
	B06 Apache Spark with IMS and DB2 data <i>Denis Gaebler, IBM Germany</i>
	C06 How WOLA is changing the game for Message Exchange <i>Carl Farkas, IBM France</i>
15:45	BREAK & EXPO
16:00	A07 IMS TM Tools (Repeats in B12) <i>Andy Nguyen, IMS Tools SME</i>
	B07 Stairway to the cloud! ... <i>Eric Bartolone, BNPP and Isabelle Bruneel, EMEA SWAT</i>
	C07 When It Comes to High Availability, How Do You Know ... <i>Greg Vance, IMS STSM</i>
17:00	BREAK & EXPO
17:15	A08 Following the 'Business Rules' to Gain Agility with you IMS applications <i>Chris Backhouse, ODM Lab</i>
	B08 The IMS Catalog and HALDB <i>Richard Tran, IMS Development</i>
	C08 DevOps for z Systems APIs with deployment ... (Repeats in B16) <i>Haley Fung, IMS Lab</i>
18:15	Closing EXPO 18:30 18:30 – 19:00 : Transfer to event with coaches, Dinner & Networking Event

HOL1  
From z Assets to APIs to Mobile: Grow your App Portfolio in No Time  
*Evgeni Liakhovich, IMS Lab  
Haley Fung, IMS Lab  
Richard Tran, IMS Lab*

HOL2  
Using Java with or within IMS  
*Robert Recknagel, FITS  
Alison Coughtrie, IBM UK  
Isabelle Bruneel, IBM France*

HOL3  
Deep Dive into IBM Analytics Accelerator Loader for z/OS 2.1  
*Timm Zimmermann & Rosemarie Galvan, IMS Tools SME*

## Wednesday, March 09 - Architects Day

9:00	Keynote K04: Leading Edge Analytics Solutions with z Helene Lyon, IBM Distinguished Engineer		
10:00	BREAK		
10:15	A09 Accelerating API Managment with StrongLoop, APIM and z/OS Connect for Enterprise System Kyle Charlet, IBM Distinguished Engineer	B09 IMS SOAP GW – The Path Forward With Ivory Service Architect Wilson Rains, GT Software	C09 Revolutionize the Way You Work With IMS Applications Using IBM UrbanCode Deploy Evgeni Liakhovich, IMS Lab
11:15	BREAK		
11:30	A10 Gain new 'Insight' with ODM Advanced's Event Processing ... Chris Backhouse, ODM Lab	B10 IMS Catalog in practise! Robert Recknagel, FITS	C10 How WOLA is changing the game ... (Repeated from C06) Carl Farkas, IBM France
12:30	Lunch & EXPO		
13:30	A11 Everything you need to know about Java ... - Part 1 Kyle Charlet, Denis Gaebler, Karl Briski, Shannon Farrington	B11 IBM z/OS Connect Enterprise Edition: The Force Awakens Carl Farkas, IBM France	C11 IMS Security in the World of Cloud, Analytics, and Mobile Deepak Kohli, IMS Lab
14:30	BREAK		
14:45	A12 What you need to know about Java ... - Part 2 Kyle Charlet, Denis Gaebler, Karl Briski, Shannon Farrington	B12 IMS TM Tools (Repeated from A06) Andy Nguyen, IMS Tools SME	C12 Database Encryption on z/OS (Repeats in from C04) Tom Hubbard, IMS Tools SME
15:45	BREAK & EXPO		
16:00	A13 z/OS Connect topic - Make Your API Catalog Essential to ... Hayley Fung, IMS Lab	B13 Making database maintenance tasks simpler and easier ... Jie Ding, IMS Tools SME	C13 Learn IMS Security from the Experts: Your IMS IT Client Peers (Repeats in in B15) Deepak Kohli, IMS Lab
17:00	BREAK & EXPO		
17:15	A14 APIs to the Data Prize: Discovery of IMS and DB2 Services with z/OS Connect Hayley Fung, IMS Lab	B14 Apache Spark with IMS and DB2 data (Repeated from B06) Denis Gaebler, IBM Germany	C14 IMS configuration discovery, audit, and analysis Rafael Avigad, IMS Tools SME
18:15	EXPO Continues		
19:30	Dinner and Networking Event @ Hotel		

## Thursday, March 10

9:00	K05: IMS meets IDAA Udo Hertz, Director of IBM z Analytics Accelerator and Tools Development		
9:45	BREAK		
10:15	A15 IBM IMS CAC, Wrap Up Shannon Farrington, IBM Design Thinking Karl Briski, IMS Offering Manager	B15 Learn IMS Security from the Experts: Your IMS IT Client Peers (Repeated from C13) Deepak Kohli, IMS Lab	C15 IBM z System Hardware - 2016 Technical Overview (Repeated from B06) Walter Klaezy, IBM Switzerland
11:15	BREAK		
11:30	A16 A Data Definition Language for Multiple Database Types (Repeated from C02) Greg Vance, IMS STSM	B16 DevOps for z Systems APIs with deployment automation and continuous delivery (Repeated from C08) Hayley Fung, IMS Lab	C16 Enable testing environments for today's application developers Ron Biscaglia, IMS Tools SME
12:30	Closing EXPO & Lunch		

Kxx Sessions – Room: Paris / London  
 Axx Sessions – Room: Paris  
 Bxx Sessions – Room: London  
 Cxx Sessions – Room: Prag  
 HOLx Sessions – Room: Foyer

# Connect with IBM IMS



[@IBM\\_IMS](https://twitter.com/IBM_IMS)



[ReThink IMS](https://www.youtube.com/ReThinkIMS)



[IBM IMS](https://www.facebook.com/IBMIMS)



[ibm.com/IMS\\_RUGs](http://ibm.com/IMS_RUGs)



[ibm.co/IMS\\_dWBlogs](http://ibm.co/IMS_dWBlogs)



[IMSLISTSERV.BMC.COM](http://IMSLISTSERV.BMC.COM)

[imslistserv.bmc.com](http://imslistserv.bmc.com)



[ibm.com/vrm/newsletter/11069](http://ibm.com/vrm/newsletter/11069)



Session	Title	Speaker	Abstract	Repeated ?
CAC 09 - 12 am	<b>Monday's Pre Session: IMS CAC Meeting</b>	Shannon Farrington, Kari Ann Briski and CAC Team	Members of the IMS Lab team will meet with a select group of participants who comprise the IMS Customer Advisory Council (CAC) to discuss and obtain feedback on potential future function and objectives in IMS.	Wrapup in A15
<b>Monday Sessions</b>				
K01	<b>IMS on IBM z Systems: The Driving Force behind Cloud, Mobile, and Analytics</b>	Barry Baker, IBM IMS Director	Cloud, Mobile, and Analytics, heralded as the driving force behind IT strategies of today, require a platform on which to drive and data with which to perform. Enterprises worldwide continue to put their trust in IMS, the premier data server on IBM z Systems. In this dynamic keynote, Barry Baker, Director, z Systems Software: IMS & TPF, takes you on a tour of how IMS continues to deliver its hallmark qualities of service alongside key integration capabilities that enable your cloud, mobile, and analytics workloads. He'll highlight the value delivered by the IMS family of products, including IMS 14, Enterprise Suite, Tools, and Value Unit Editions, and share client success stories that position IMS as a driving force for years to come.	
K02	<b>Let IMS Open Doors for Your New Business Opportunities</b>	Greg Vance, IMS STSM and Janet LeBlanc, IMS Tools Strategist	Is your mobile workload growing? Are your change windows shrinking? Are you looking for ways to simplify your system management to make cloud-style provisioning with self-service portals a reality? In this session, IMS STSM Greg Vance will discuss recent IMS major announcements and show how IBM IMS bridges your enterprise Systems of Record with today's complex Systems of Engagement and your IT systems of tomorrow. Joining Greg is Janet LeBlanc, IMS Tools Strategist, who will show how the IBM IMS Tools portfolio is aligned with new IMS capabilities to help open the doors for your new business opportunities.	
A01	<b>IMS Infrastructure matters - the HOW and WOW of innovative growth, simplified operations, and secure access</b>	Suzie Wendler, IBM Washington System Center	As the enterprise environment continues to evolve with the emerging complexities of new technologies and business requirements, systems such as IMS have provided rich functionality and enhanced capabilities as part of their architected framework to answer those needs. This session discusses the potential that is already available in your infrastructure - potential that includes the dynamic management of your resources, support for the growth and elasticity demands of enterprise mobility, the simplification of operations management, open access to transactions and data... all within the bounds of secured processes. Find out what this means to your environment and how you can leverage what is already there. For enterprise systems and especially for IMS... infrastructure definitely matters!	
B01	<b>IBM z System Hardware - 2016 Technical Overview</b>	Walter Klaey, IBM Switzerland	If you are curious about IBM's most recently announced z hardware, this is the session for you! IBM's z system platform continues to dominate as one of the most sophisticated computer systems ever built. Designed to securely enable the digital era for cloud, mobile and advanced analytics, it will become the power plant to help meet your expectations about your evolving workloads. In this session, Walter Klaey will update you with the new features and possibilities of IBM's new z System hardware.	Yes, in C15
C01	<b>Unleash the analytic power of your IMS data using IDAA</b>	Timm Zimmermann, IMS Tools SME	The IBM Database Analytics Accelerator brings superior analytics power to DB2 for z/OS. But IMS is frequently considered as the master copy from which other data stores are populated. So bringing analytics insight to IMS data can be a huge benefit. Unfortunately, the process of transforming IMS data into IBM Database Analytics Accelerator can be rather complex, and has an effect on how current the data base repository is. This session will talk about a new way of populating IMS data in the Accelerator using IBM DB2 Analytics Accelerator Loader V2R1 without the need to stage the IMS data somewhere else. 1. Understand the concept of data virtualization functionality of the new DB2 Analytics Accelerator Loader 2. How to connect IMS to Accelerator Loader Server 3. Understand the process of refreshing the data using LOAD RESUME support 4. Monitoring and Performance considerations for high data throughput 5. Real customer use cases.	



A02	<b>IMS on IBM z Systems: Driving T2S Securities Settlement for Europe</b>	Miguel Gallego, Banco de España	T2S, a landmark platform for securities settlement in Europe built on IBM z Systems, including IMS and DB2 for z/OS, went into production in June. Implemented by Banco de España, Deutsche Bundesbank, Banque de France and Banca d'Italia, the national banks of these first four countries began using T2S for settlement of euro transactions; the roll-out will continue across 21 European countries over the next two years. Miguel Gallegos, Enterprise Architect from Banco de España, will present the whole story in this session, highlighting the key role played by IMS on IBM z Systems.	
B02	<b>BMC Expands their Products for IMS</b>	David Schipper, BMC	A lot has happened with IMS and BMC Solutions for IMS since the last Symposium. Sure there is a new IMS release, but there are also new releases of the BMC Solutions for IMS, MainView for IMS, Subsystem Analyzer for IMS and more. Get an update on the new capabilities BMC has added to provide expanded support of IMS, including the new support in BMC Subsystem Analyzer to separate IMS TM and DB2 to save on MLC costs.	
C02	<b>A Data Definition Language for Multiple Database Types</b>	Greg Vance, IMS STSM	This presentation provides an introduction on how the same syntactical language can be used to define and modify resource and structure definitions for several database environments. It discusses the use of a data definition syntax that can define, modify and remove database resources and then goes on to more granularly map and compare the different syntaxes required for different database environments on z/OS. This session is of value to DB2 administrators that are trying to learn IMS and to IMS administrators that have to manage both IMS and DB2 data.	Yes, in A16
<b>Tuesday Sessions</b>				
K03	<b>IMS Vendor Introductions and IMS Tools Keynote</b>	Janet LeBlanc, IMS Tools Strategist	The partnership between IBM IMS and the IMS Tools ecosystem is thriving! The announcement of IMS 14 included Day 1 Readiness from IMS Tools. In this session, Janet LeBlanc, responsible for IMS Tools Strategy, will bring you up to date on all of the new capabilities offered by IMS Tools.	
HOL1 (2 hrs)	<b>From z Assets to APIs to Mobile: Grow your App Portfolio in No Time</b>  <b>(double session)</b>	Evgeni Liakhovich, IMS Lab Haley Fung, IMS Lab Richard Tran, IMS Lab	Enterprise clients looking to save money by repurposing their IBM z Systems assets as mobile apps will gain hands-on experience in this comprehensive lab. It covers the end-to-end collaboration that begins with z/OS assets such as IMS applications, moves into API creation and API integration, and ends with robust mobile apps that maintain the levels of service associated with IBM z Systems. Both Application Developers and z/OS System Programmers will gain significant knowledge by attending this lab.	
A03	<b>How z/OS Connect changes IMS performance and problem management</b>	Rafael Avigad, IMS Tools SME	z/OS Connect simplifies access to IMS by providing a REST/JSON interface. It is strategic for the integration of IMS with mobile and the cloud. z/OS Connect introduces new performance and problem analysis challenges, and heralds new operational requirements. How do you evaluate end-to-end transaction performance? How do you provide operational analytics to the cloud/mobile developers? What tools do you use to pinpoint production problems that span both z/OS and distributed infrastructure? We will look at addressing these questions with both IBM and open source tools.	
B03	<b>A day in a life of an IMS application</b>	Ralph Nuesse, Compuware	Tools around software lifecycle always did help and still do for software application developers on the mainframe. But nowadays the requirements from all business lines towards their IT infrastructure are changing faster than ever and it's a huge challenge for all AD departments to follow and satisfy those change requests and adapt to the new situation. You all might follow different approaches, so for instance a complete migration into agile era or to follow the bi modal method, or maybe you stay with your legacy and traditional development tools and workflows. But independent from your method of application development the tool of your choice gets more and more important to keep up with the high frequency of changes and to be flexible. In this presentation we will show you how you can use available development tools nowadays and in future, to keep up with these new challenges and business requirements. We consider the gaps between the different IT teams, as development, operating, testing and will show how to ease the cooperation across boundaries with the goal to speed up the cycle of problem identification and analysing, error fixing and solving, testing and rollout of the changes. We will be focused on IMS specific aspects.	
C03	<b>OMEGAMON IMS - NEWS</b>	Klaus Schunk, IBM Germany	This session will look back over the improvements of the last 10 years and also will show up the newest functions (especially in the historical area) of the OMEGAMON XE for IMS v530.	





A04	<b>Self-service Cloud Provisioning for IMS Made Easy with z/OSMF Workflows</b>	Poonam Chitale, IMS Development	Does your enterprise provide self-service cloud-style provisioning for distributed platforms? Have you considered providing similar capabilities for your mainframe environment? Wondering where to start? In this session, you will learn how you can use z/OSMF workflows as a building block in your on-premise self-service provisioning for IMS systems and application development environments. You'll see first hand how z/OSMF workflows can improve productivity by automating common tasks and why it's OK to have your head in the clouds.	
B04	<b>IBM IMS Tools CAC (requires NDA)</b>	Janet LeBlanc and others	Only for customers that have signed a non-disclosure agreement	
C04	<b>Database Encryption on z/OS</b>	Tom Hubbard, IMS Tools SME	Encrypting sensitive data in databases is no longer optional. Data encryption has become a business imperative. Is your organization looking to secure intellectual property, comply with privacy or regulatory mandates, or simply guard against damage associated with data breaches? In any of those scenarios, database encryption is a key requirement. This session will compare and contrast the encryption options for DB2 and IMS databases on z/OS systems. 1. Understand the options for encrypting DB2 and IMS databases on z/OS. 2. Be able to evaluate the benefits of hardware vs. software encryption techniques. 3. Understand the difference between available encryption algorithms. 4. Understand the process of implementing database encryption on z/OS	Yes, in C12
HOL2 (2hrs)	<b>Using Java with or within IMS</b>	Robert Recknagel, FITS, Alison Coughtrie, IBM UK, Isabelle Bruneel, IBM France	Since Java became one of the most important programming languages in the world, it is necessary to have a look on Java with and within IMS. This hands-on lab will introduce in how to access IMS data directly from distributed Java applications, how to call IMS transactions from distributed Java applications and how to implement IMS applications using Java. Besides this the lab will explain how to setup IMS Java dependent regions, how to use IMS Catalog as a metadata source for Java applications accessing IMS data and how to use SQL as the query language for IMS data access. This lab was designed for both IMS system programmers that do not have any Java skills and Java developers that do not have any IMS knowledge. Therefore a lot of additional information on Java specifics and on IMS specifics is given to the participants. As part of the lab you will access a small IMS database and implement some very simple Java applications running on your laptop or in an IMS Java dependent region. Because the lab is very extensive, you may not be able to run the whole lab, if you are not familiar with both Java and IMS – but do not worry, it is possible to choose and run the parts you interested in most.	
A05	<b>The Ever-evolving Impacts of Cloud and Mobility on Enterprise Growth</b>	Suzie Wendler, IBM Washington System Center	More and more companies recognize that cloud technology and mobile applications can help them achieve business goals. zSystem solutions can provide a secure, well-managed, multi-architecture cloud platform where resources are elastic, workloads can be heterogeneous, service levels are automatically met, and overall costs are dramatically reduced. An IMS environment is shown as an example of how integration with z solutions can be used to create the perfect cloud and access newly-defined resources as well as those that have been part of mission-critical systems for years, even before cloud technology was created. The session also shows how you can leverage existing, trusted IMS applications to create cutting-edge mobile applications that run on today's most popular handheld and tablet devices.	
B05	<b>Real Time IMS to Big Data</b>	Scott Quillicy SQData	A key requirement of data analytics is that the information being mined should be as current as possible. Companies who operate against day old (or more) data are at a serious disadvantage to those who leverage current information. For Big Data platforms such as Hadoop, Cassandra, Spark and IDAA, this requires performing incremental updates directly from IMS as updates are captured near-real-time. As opposed to performing bulk loads of IMS data on a regular schedule, data replication provides an efficient method of maintaining data currency on a continuous basis. This presentation focuses on how to update Big Data platforms directly from IMS via data replication. In addition, to the incremental update process, this discussion includes general design considerations, common data issues, latency expectations and the role of bulk data loads.	
C05	<b>IMS Connect for Enterprise Workloads</b>	Rafael Avigad, IMS Tools SME	IMS Connect is a TCP/IP gateway for IMS. It is central for modern access to IMS databases and transactions. It is used by the Connect API (Java and .NET), z/OS Connect (JSON/REST), and the SOAP Gateway. Getting started with IMS Connect is easy. However, making IMS Connect suitable for the various kinds of workloads it can facilitate can challenge your implementation. How do you provide scalability and elasticity that you need? How do you make your environment resilient to changes in both clients and IMS?	

A06	<b>IMS Connect: Much More Than a TCP/IP Gateway!</b>	Suzie Wendler, IBM Washington System Center	IMS Connect has been an integral part of IMS for years; what started as a TCP/IP gateway has grown into a superhighway capable of hosting transaction volumes that exploded with the growth of Mobile, Analytics, and much more. Do you know all of the ways in which you can leverage IMS Connect? Are you using it as a DRDA end point? Or do you still think of it as a simple TCP/IP gateway, and nothing more? Prepare to be impressed when Suzie Wendler shares with you expansive capabilities that can help you save time and money.	
B06	<b>Apache Spark with IMS and DB2 data</b>	Denis Gaebler, IBM Germany	Everyone is talking about Apache Spark, which promises to resolve the challenges associated with accessing data across the enterprise! IBM is betting on Apache Spark to do just that. In this session Dennis Gaebler will show how to use the Analytics Framework Apache Spark with IMS and DB2 data: how to connect to IMS and DB2 data using Apache Spark dataframes, how to perform analytics against that data, and how to use Scala and Apache Spark on z/OS.	Yes, in B14
C06	<b>How WOLA is changing the game for Message Exchange</b>	Carl Farkas, IBM France	The IBM WebSphere Optimized Local Adapter (WOLA) technology has proven to be game-changing! WOLA is a high-speed, simple, robust interface for exchanging data between WebSphere Application Server (WAS) on z/OS and other local address spaces, such as IMS. Its use is growing in popularity with both "classic" WAS on z/OS clients as well as the more recent clients embracing stream-lined Liberty WAS on z/OS. In this presentation Carl Farkas introduces the basic concepts of WOLA, shares some customer use cases, and discusses areas in which IBM is considering enhancing WOLA for the future.	Yes, in C10
HOL3 (2 hrs)	<b>Deep Dive into IBM Analytics Accelerator Loader for z/OS 2.1</b>	Timm Zimmermann & Rosemarie Galvan, IMS Tools SME	The new IBM Database Analytics Accelerator Loader V2.1 is not just a new version. It also brings a data virtualization engine which allows direct access to a vast variety of data sources that can be accessed and loaded into the Accelerator in one go. This hands-on lab will guide you through the new Accelerator Loader architecture and its components, how to create virtual tables and use them to access data sources directly to load it into the Accelerator. The exercises will cover IMS, DB2 LUW, SMF, and Sequential data sources.	
A07	<b>IMS TM Tools</b>	Andy Nguyen, IMS Tools SME	IMS Tools are not just about IMS databases. Whether you are working on configuration, administration, queues, exits, and more, we can provide you with the tools you need to manage your IMS system and IMS Transaction Manager. In this session you will hear about our all tooling for the IMS TM: the products major capabilities and latest updates. 1. Simplify administration of large IMS environments with a single point of control and automation 2. Simplify IMS exit management 3. Streamline workflow for IMS application resource changes 4. Reduce outages, by proactively preventing queue space problems 5. Dynamically and automatically balance workloads, based on IMS availability	Yes, in B12
B07	<b>Stairway to the cloud !!! Turning our current development environment into a cloud-compliant service</b>	Eric Bartolone, BNPP and Isabelle Bruneel, EMEA SWAT	Based on their role at BNPP between IT and LOBs, Eric's team primary goal is to deliver a better service to business projects while evolving into a cloud service. The first step of this project involved the creation of a reference set of both technical and application assets that could be duplicated automatically within a short timeframe. The next challenge will be to propose cloud services based on this reference set. During the session Eric will position the solution they have designed and will expect other customers comments.	
C07	<b>When It Comes to High Availability, How Do You Know your System Makes the Grade?</b>	Greg Vance, IMS STSM	If you're in IT, you know the true cost of an outage, planned or otherwise. It makes business sense to defend against unplanned outages, and to minimize or eliminate planned outages. Do you still have planned outages in your IMS system? Are you looking for ways to take IMS from highly available to highest available? Bring your questions to our IMS Availability Talk, an open and interactive dialogue led by IMS Availability Expert and STSM Greg Vance. This educational networking opportunity will shed new light on this important topic and help you plan your way to greater availability with IMS.	



A08	<b>Following the 'Business Rules' to Gain Agility with you IMS applications</b>	Chris Backhouse, ODM Lab	Today's competitive landscape demands fast, accurate business decisions. This level of agility can be a challenge when critical IMS applications contain static decision logic. IBM Operational Decision Manager for z/OS (ODM for z/OS) enables you to achieve greater agility and consistency of decisions in your IMS applications by avoiding lengthy development cycles through externalizing business rules from code. This session covers the advantages gained with ODM for z/OS and gives details of the execution options designed specifically for z/OS	
B08	<b>The IMS Catalog and HALDB</b>	Richard Tran, IMS Development	The decision to implement the IMS Catalog in an IMS High Availability Large Database (HALDB) was to ensure a trusted, online source for IMS Database and Application metadata information that is fully managed by IMS. This synergy delivers many benefits to you! In this session, Richard Tran will update you on both IMS Catalog and on IMS HALDB. He will address recent enhancements, integration considerations, importing metadata, and much more.	
C08	<b>DevOps for z Systems APIs with deployment automation and continuous delivery</b>	Haley Fung, IMS Lab	IBM z/OS Connect Enterprise Edition provides a first-class solution to easily turn your mission critical IMS, CICS, or other z Systems assets into APIs. With the increasing number of z Systems APIs to manage and deployment to automate, how you manage your growing portfolio of APIs becomes a crucial task in your DevOps strategy. Join Haley Fung to learn some best practices about how IBM z/OS Connect can help you succeed at this task.	Yes, in B16

### Wednesday Sessions - Architect's Day

K04	<b>Leading Edge Analytics Solutions with z Systems</b>	Helene Lyon, IBM Distinguished Engineer	Get real-time business value from your enterprise applications & data' - Analytics is one of the hot-button topics for agile enterprises. End users are looking more than ever for relevant and accurate information for which their enterprise assets are the fundamental enabler. Challenges are about removing the time lag between analytics and business impact. Learn how to get the right solution leveraging your IMS applications and data.	
HOL4 (2 hrs)	<b>IMS Connect</b>	Rafael Avigad & Alan Walmsley, IMS Tools SME	The workshop provides a follow up to the IMS Connect for Enterprise Workloads presentation. It will provide practical scenarios where you can dynamically shape workloads and instrument IMS Connect.	
A09	<b>Accelerating API Management with StrongLoop, APIM and z/OS Connect for Enterprise System</b>	Kyle Charlet, IBM Distinguished Engineer	All z Systems customers have a significant new business opportunity to extend their reach to new customers and markets with new applications and services, and to improve the experience of existing customers. This can be achieved by exposing existing z assets (which have been developed over time) as APIs for accessing Systems of Record, while leveraging mobile and cloud capabilities with new Systems of Engagement applications. In this session, we will explore. business drivers with new Node.js apps for delivering enhanced customer experience (with mobile and cloud adoption), how to accelerate development and management of SoE app APIs with StrongLoop, and how to leverage z assets with API management	
B09	<b>IMS SOAP GW – The Path Forward With Ivory Service Architect</b>	Wilson Rains, GT Software	If you have IMS SOAP Gateway deployed, don't miss this session with IBM Business Partner GT Software. Wilson Rains from GT Software will update you on Ivory Service Architect, which easily extends access to the mainframe through Web services. A special focus on its advanced integration capabilities for SOAP, REST, and JSON will confirm its role as a key part of the IMS ecosystem, enabling IMS to excel in the Digital Marketplace.	
C09	<b>Revolutionize the Way You Work With IMS Applications Using IBM UrbanCode Deploy</b>	Evgeni Liakhovich, IMS Lab	IBM UrbanCode Deploy is the product that helps with application deployment (the process of moving software applications through various preproduction stages to final production). UrbanCode Deploy supports multiple deployment environments, including IBM z System, as well as multiple application types, including IMS applications. In this session Evgeni Liakhovich will demonstrate how UrbanCode Deploy can revolutionize the way you work with IMS applications, by increasing deployment speeds while simultaneously improving reliability.	



A10	Gain new 'Insight' with ODM Advanced's Event Processing capabilities and IMS	Chris Backhouse, ODM Lab	Business is changing. So you need to change how you operate to improve customer relationships and increase productivity. Operational decision management (ODM) delivers both agility and the control needed to support this change. With the newly available ODM Advanced for z/OS we have the ability to directly process business events from your IMS applications, along with aggregating together data from other sources including real time analytics. This new capability now gives us a way to identify situations of business interest within in the business moment. This provides a new level of agility in applications. Come and gain an understanding of real-world use cases where you might leverage IBM ODM Advanced with IMS to improve business outcomes for example for fraud detection & analytics in real-time.	
B10	IMS Catalog in practise	Robert Recknagel, FITS	In this presentation Robert will give you a report on experiences FI-TS has made during the preparations and the rollout of the IMS Catalog to some of the FI-TS customer systems. As part of this he will present how FI-TS has implemented IMS Catalog on these systems and what processes are used for its operation. Robert will also show how to gather information about DBDs and PSBs from the IMS Catalog by using IMS Explorer and by using some self-implemented ISPF based tooling. Furthermore this presentation will give you some information on DBD and PSB metadata enrichment necessary for SQL access to IMS databases.	
C10	How WOLA is changing the game for Message Exchange	Carl Farkas, IBM France	The IBM WebSphere Optimized Local Adapter (WOLA) technology has proven to be game-changing! WOLA is a high-speed, simple, robust interface for exchanging data between WebSphere Application Server (WAS) on z/OS and other local address spaces, such as IMS. Its use is growing in popularity with both "classic" WAS on z/OS clients as well as the more recent clients embracing stream-lined Liberty WAS on z/OS. In this presentation Carl Farkas introduces the basic concepts of WOLA, shares some customer use cases, and discusses areas in which IBM is considering enhancing WOLA for the future.	Yes, from C06
HOL5 (2 hrs)	Analytics and TAW	Rafael Avigad & Alan Walmsley, IMS Tools SME	The workshop provides a follow up to the presentation. It allows you to go hands-on with dashboards available via github that provide performance analytics for IMS and other z/OS subsystems. The workshop provides an opportunity to identify what the available instrumentation options and provide feedback on what instrumentation you would like to see.	
A11	Everything you need to know about Java as an IBM Strategic Initiative - Part 1	Kyle Charlet, Denis Gaebler, Kari Briski, Shannon Farrington	Java has been supported on z Systems for many years now; but there is a renewed focus on the partnership between Java and z. Together they combine for powerful performance, abundant skill set, and many more benefits. In Part 1 of this 2-part interactive panel discussion, you will learn why Java is critically important to IBM, how IBM is investing in this partnership, the role of Open Source, and how you can get started with a modernization roadmap that features Java on z.	
B11	IBM z/OS Connect Enterprise Edition: The Force Awakens	Carl Farkas, IBM France	In 2015 IBM z/OS Connect was introduced as a mobile gateway for z/OS subsystems, enabling you to leverage your z/OS assets via a simple, easy-to-consume API. IBM offered it free-of-charge with the major z/OS transactional subsystems (WAS, CICS, IMS, DB2). Because of the keen interest clients have shown in z/OS Connect, IBM invested more in this key technology to make it Enterprise Ready. In December 2015 IBM announced a new version of this gateway as a distinct IBM product: IBM z/OS Connect Enterprise Edition 2.0. This session will introduce this enhanced version, explaining its unique value. You'll understand how the technology has matured and the position it takes in your enterprise with IMS.	
C11	IMS Security in the World of Cloud, Analytics, and Mobile	Deepak Kohli, IMS Lab	The current evolution of IT is being fueled by Cloud, Analytics, and Mobile. In this world of IMS data and transactions moving along and through every mobile device imaginable, how are you managing your IMS Security? We hear stories monthly or even weekly about large corporations experiencing data breaches. Avoid becoming a headline with your IMS data! Deepak Kohli will show you how you can continue to confidently access both IMS transaction and IMS data to fuel your business growth while ensuring z System-level security.	



A12	<b>What you need to know about Java as an IBM Strategic Initiative - Part 2</b>	Kyle Charlet, Denis Gaebler, Kari Briski, Shannon Farrington	If you have already begun to exploit the performance power of Java on z, Part 2 of this interactive panel discussion will take the technology to the next level. You'll hear details about integration, the role of speciality engines like zIIP, where interoperability is headed, and much more. Bring your questions for our expert panelists!	
B12	<b>IMS TM Tools</b>	Andy Nguyen, IMS Tools SME	IMS Tools are not just about IMS databases. Whether you are working on configuration, administration, queues, exits, and more, we can provide you with the tools you need to manage your IMS system and IMS Transaction Manager. In this session you will hear about our all tooling for the IMS TM: the products major capabilities and latest updates. 1. Simplify administration of large IMS environments with a single point of control and automation 2. Simplify IMS exit management 3. Streamline workflow for IMS application resource changes 4. Reduce outages, by proactively preventing queue space problems 5. Dynamically and automatically balance workloads, based on IMS availability	Yes, from A07
C12	<b>Database Encryption on z/OS</b>	Tom Hubbard, IMS Tools SME	Encrypting sensitive data in databases is no longer optional. Data encryption has become a business imperative. Is your organization looking to secure intellectual property, comply with privacy or regulatory mandates, or simply guard against damage associated with data breaches? In any of those scenarios, database encryption is a key requirement. This session will compare and contrast the encryption options for DB2 and IMS databases on z/OS systems. 1. Understand the options for encrypting DB2 and IMS databases on z/OS. 2. Be able to evaluate the benefits of hardware vs. software encryption techniques. 3. Understand the difference between available encryption algorithms. 4. Understand the process of implementing database encryption on z/OS	Yes, from C04
HOL6 (2 hrs)	<b>Exploiting the IMS Catalog using IMS Explorer for Development</b>	Alison Coughtrie, IBM UK Isabelle Bruneel, IBM France	This Lab will give Overview of IMS Catalog & IMS Explorer for Development. The topics are Accessing the IMS Catalog using the IMS Explorer for Development, Accessing an IMS database using the IMS Explorer, Adding copybook metadata to a database using the IMS Explorer, Exporting the new Database Description to the host and Populating the IMS Catalog. Furthermore, Running SQL queries against the Catalog and new metadata in the database from the Explorer. An additional topic will cover SQL Queries using IMS Native SQL for COBOL against the IMS Catalog and other IMS databases (including a short overview of IMS Native SQL for COBOL) Lab SME: Alison Coughtrie	
A13	<b>z/OS Connect topic - Make Your API Catalog Essential to Mobile App Developers and Business Partners with z/OS Connect</b>	Haley Fung, IMS Lab	z/OS Connect takes the power of z Systems to the API economy, enabling you to drive new business opportunities through naturally RESTful APIs and JSON with integrated tools for DevOps. The rapid growth of APIs as a means of providing and consuming capability is a perfect match for the scalability and robustness of IBM z Systems. API management enables businesses to create, proxy, assemble, secure, scale, and socialize APIs quickly and easily. Enterprises that run their core business services on the mainframe are now looking for ways to make those services easily discoverable and consumable as APIs. z/OS Connect adds the API concept to the existing first-class support for service-enablement of z assets with CICS, IMS, and BATCH.	
B13	<b>Making database maintenance tasks simpler and easier than ever with the IBM IMS Fast Path Solution Pack</b>	Jie Ding, IMS Tools SME	Big data and 24x7 operation environments bring many challenges to database maintenance. Space management tasks for hundreds and thousands of DEDB areas require large workloads and deep IMS experience. Ineffective maintenance causes unnecessary impacts upon online performance. IMS Fast Path Solution Pack provides solutions to these issues and makes database maintenance tasks simpler and easier than ever: 1. Automate complicated area space management 2. Simplify significant and time-consuming database tuning 3. Provide functions for task efficiency 4. Maintain the IMS Fast Path Secondary Index	
C13	<b>Learn IMS Security from the Experts: Your IMS IT Client Peers</b>	Deepak Kohli, IMS Lab	With OTMA and Open Database, IMS became "open" for business in new and exciting ways. That level of openness, combined with the demands of a global mobile market, means that your IMS data and transactions can be part of the transactional choreography that stretches far beyond IBM z Systems! How do you make sure that your IMS Security is rock solid? By attending this session, in which Deepak Kohli will share all of the security Hints, Tips, FAQs and Best Practices that he has picked up in all of his client interactions. Hear what other IMS clients are asking; learn from their experience; solve your current problems and avoid future ones!	Yes, in B15



A14	<b>APIs to the Data Prize: Discovery of IMS and DB2 Services with z/OS Connect</b>	Haley Fung, IMS Lab	APIs change how organizations build innovative mobile & web applications and integrate with cloud and third party applications. IBM z Systems clients have made significant investments developing assets that support mission-critical business functions. With IBM API Management, clients can govern the way APIs are consumed and get detailed analytic insights on the success of the APIs and applications that are consuming them. This session with its associated demo highlights how you can discover deployed z System IMS and DB2 assets, both Web and REST based services, and import information about services, to streamline exposing these services as APIs.	
B14	<b>Apache Spark with IMS and DB2 data</b>	Denis Gaebler, IBM Germany	Everyone is talking about Apache Spark, which promises to resolve the challenges associated with accessing data across the enterprise! IBM is betting on Apache Spark to do just that. In this session Dennis Gaebler will show how to use the Analytics Framework Apache Spark with IMS and DB2 data: how to connect to IMS and DB2 data using Apache Spark dataframes, how to perform analytics against that data, and how to use Scala and Apache Spark on z/OS.	Yes, from B06
C14	<b>IMS configuration discovery, audit, and analysis</b>	Rafael Avigad, IMS Tools SME	IMS systems today can consist of up to 9 separate address spaces. They are configured by 35 different PROCLIB members, containing about 900 parameters and sub-parameters. Over 200 parameters have been added or modified in the last three IMS releases. Lack of understanding and fear of change to these parameters limits adoption of new features, makes audit difficult, and prevents the consolidation and simplification of systems. In this presentation, we'll look at how to gain the relevant insight in minutes.	

### Thursday Sessions

K05	<b>IMS meets IDAA</b>	Udo Hertz, Director of IBM z Analytics Accelerator and Tools Development	Organizations worldwide are realizing great value from the mainframe environment transforming it into a highly-efficient transactional and analytics processing environment. How do they achieve the industry-leading performance needed to match today's requirements for business-critical reporting and advanced analytics? How can you exploit your IMS data to take advantage of new opportunities, improve efficiency and drive smarter outcomes? These questions and more will be answered in this keynote presentation which will discuss how IBM is bringing analytics to z Systems data.	
A15	<b>IBM IMS CAC, Wrap Up</b>	Shannon Farrington, IBM Design Thinking  Kari Briski, IMS Offering Manager	IMS CAC participants should attend this session to hear about how the results of Monday's activity will translate into next steps and set a course for collaboration between the IMS Lab and the CAC group.	
B15	<b>Learn IMS Security from the Experts: Your IMS IT Client Peers</b>	Deepak Kohli, IMS Lab	With OTMA and Open Database, IMS became "open" for business in new and exciting ways. That level of openness, combined with the demands of a global mobile market, means that your IMS data and transactions can be part of the transactional choreography that stretches far beyond IBM z Systems! How do you make sure that your IMS Security is rock solid? By attending this session, in which Deepak Kohli will share all of the security Hints, Tips, FAQs and Best Practices that he has picked up in all of his client interactions. Hear what other IMS clients are asking; learn from their experience; solve your current problems and avoid future ones!	Yes, from C13
C15	<b>IBM z System Hardware - 2016 Technical Overview</b>	Walter Klaey, IBM Switzerland	If you are curious about IBM's most recently announced z hardware, this is the session for you! IBM's z system platform continues to dominate as one of the most sophisticated computer systems ever built. Designed to securely enable the digital era for cloud, mobile and advanced analytics, it will become the power plant to help meet your expectations about your evolving workloads. In this session, Walter Klaey will update you with the new features and possibilities of IBM's new z System hardware.	Yes, from B01



A16	<b>A Data Definition Language for Multiple Database Types</b>	Greg Vance, IMS STSM	This presentation provides an introduction on how the same syntactical language can be used to define and modify resource and structure definitions for several database environments. It discusses the use of a data definition syntax that can define, modify and remove database resources and then goes on to more granularly map and compare the different syntaxes required for different database environments on z/OS. This session is of value to DB2 administrators that are trying to learn IMS and to IMS administrators that have to manage both IMS and DB2 data.	Yes, from C02
B16	<b>DevOps for z Systems APIs with deployment automation and continuous delivery</b>	Haley Fung, IMS Lab	IBM z/OS Connect Enterprise Edition provides a first-class solution to easily turn your mission critical IMS, CICS, or other z Systems assets into APIs. With the increasing number of z Systems APIs to manage and deployment to automate, how you manage your growing portfolio of APIs becomes a crucial task in your DevOps strategy. Join Haley Fung to learn some best practices about how IBM z/OS Connect can help you succeed at this task.	Yes, from C08
C16	<b>Enable testing environments for today's application developers</b>	Ron Bisceglia, IMS Tools SME	<p>Application development today is often not done on zSystems. The typical application developer knows little about zSystems. However, the majority of data which applications process resides on zSystems. This session will discuss ways to address the challenges for non-zSystems developers with the need to provision proper testing environments and create test data efficiently and securely.</p> <ol style="list-style-type: none"> <li>1. Understand the capabilities of zOSMF.</li> <li>2. Learn how zOSMF and IMS Cloning Tool can be used to provision development environments on zOS through a web based GUI.</li> <li>3. Learn how to configure zOSMF to provision various testing environments quickly.</li> <li>4. Learn how IMS transactions can be tested from a web based GUI using Batch Terminal Simulator.</li> </ol>	



## ➤ IMS Customer Advisory Council



- Monthly e-Meetings (contact Shannon for details)
- Face-to-face Meetings (\*)
- Information On Demand (IOD) Conference
- Networking opportunities with peer IMS experts worldwide
- Influence the strategic product direction of IMS!

Interested in joining?

Contact: Shannon Farrington [shannonf@us.ibm.com](mailto:shannonf@us.ibm.com)  
or Kristi Ramey [kramey@us.ibm.com](mailto:kramey@us.ibm.com)

(\*)

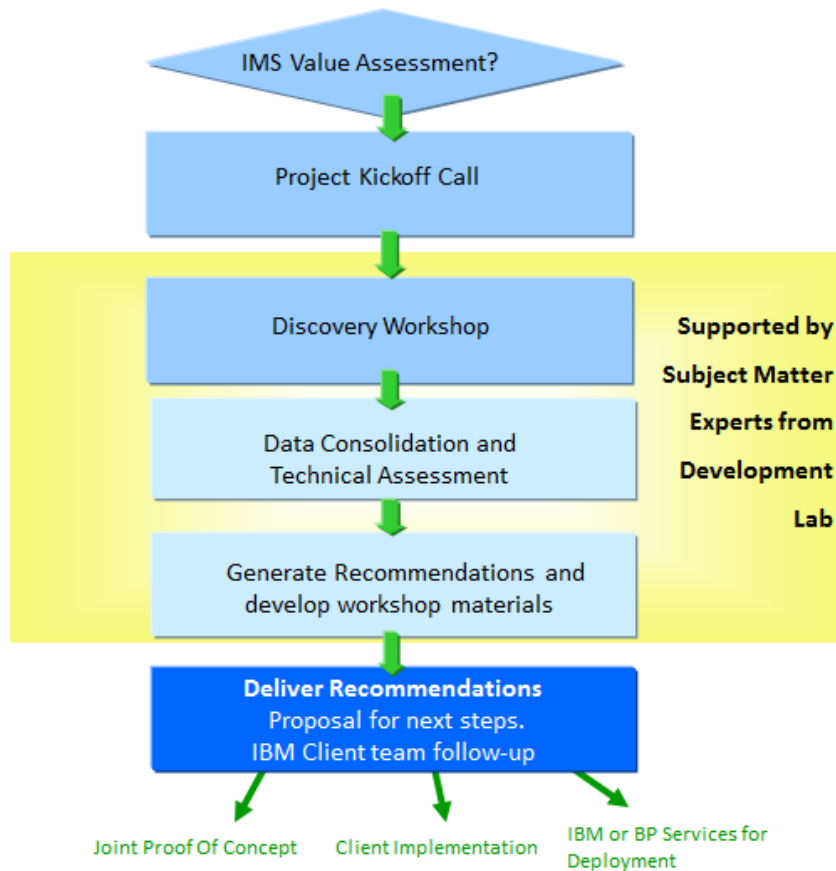
**Next face-to-face meeting right here at our IMS Symposium 2016, Monday morning 9am – 12am (room London) & CAC wrapup session A15 (CAC session B04 for IMS Tools)**

Members of the IMS and IMS Tools team will meet with a select group of participants who comprise the IMS Customer Advisory Council (CAC) to discuss and obtain feedback on potential future function and objectives in IMS and IMS Tools. Participants for CAC session B04 / IMS Tools who haven't yet need to sign a nondisclosure agreement (NDA).





# ➤ IMS Business Value Assessment Workshop



Help clients identify ways to get more out of their IMS investment

- A proactive assessment
- Provides tactical and strategic recommendations to:
  - Increase benefits
  - Lower costs
  - Improve processing efficiencies for IMS applications

Contact Evgeni Liakhovich for details at [evgueni@us.ibm.com](mailto:evgueni@us.ibm.com)

# IBM's Redbooks app - a must have !



**Get more IBM resources at your fingertips**

New version of the IBM Redbooks mobile app now available



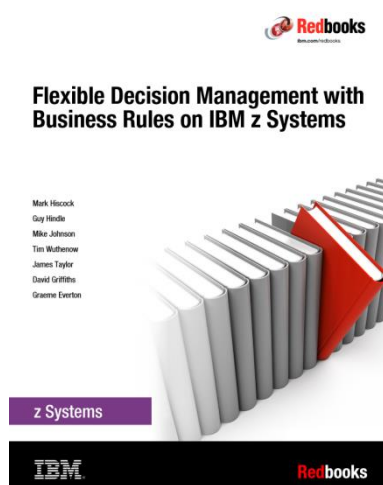
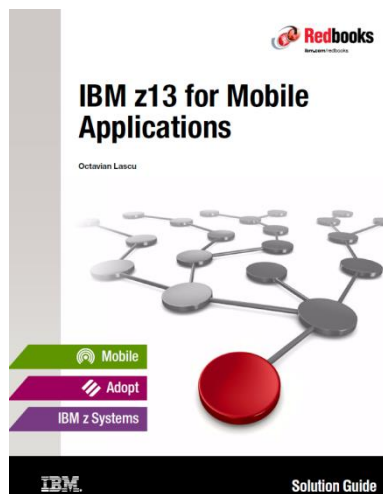
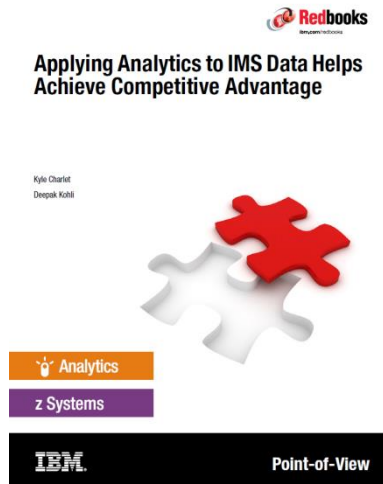
#IBMRedbooks



[Get it here](http://t.co/FFEXwAHBxF)  
<http://t.co/FFEXwAHBxF>



# New Redbooks with IMS topics



## Thank you to Our Customer Speakers



### Robert Recknagel - Datenbanken Mainframe, Team IMS, FITS GmbH & Co. KG

Robert Recknagel is a former computer science student of the University of Leipzig. During his studies he dealt with new ways accessing IMS databases. Robert already had a talk about Java-driven SQL access to IMS databases on the IMS Technical Symposium last year. Since July 2014 he is IMS system programmer at Finanz Informatik Technologie Service GmbH & Co. KG in Haar near Munich.



### Eric Bartolone - BNPP

Eric Bartolone is team leader of two teams, the mainframe experts on development tools and middleware (French Retail Banking middleware, CICS, MQ Series, PD-Tools and others), as well as the mainframe operational control center (ressources sharing & control between business lines, goal achievements by business lines). Further he is responsible for project leadership in the areas of WorkLoad Management and mainframe MIPS consumption reduction.



### Luis Miguel Gallego - Banco de Espana

Luis Gallego has been working for more than 10 years at the Banco de Espana. He is part of the system programming team responsible for z platform and he is leading several projects in the areas of high availability, application modernization and security.



## Vendor Speakers



### [Scott Quillicy – CEO, SQData](#)

Scott Quillicy is the CEO and founder of SQData, an Addison, TX based software company that specializes in high-performance data movement and changed data capture (CDC) for IMS, VSAM and relational databases. He has over 30 years of database experience and is considered an expert in database replication strategy and deployment. Scott has managed a number of large data integration projects, many of which involved the near-real-time data capture of IMS databases to a variety of downstream databases / applications.



### [Dave Schipper – Lead Product Manager, BMC USA](#)

Dave Schipper is a lead product manager at BMC Software responsible for the BMC Subsystem Analyzer for zEnterprise (Subzero) and the BMC Database Solutions for IMS. As product manager, Dave works with customers to understand their needs and uses that information to set product directions and prioritize new product capabilities as he interfaces with the development teams. Dave has over 30 years of experience with mainframe systems and has been in product management for over 20 years. Dave has Bachelor of Science degrees in Computer Engineering and Applied Mathematics from the University of Michigan as well as a Master of Science in Computer, Information and Control Engineering from the University of Michigan.



### [Ralph Nuesse – Compuware](#)

Ralph works in IT for over 15 years. In his current job role as EMEA Technical Specialist for Compuware he supports our regional Compuware teams when going onsite to our customer shops. This support includes installation and configuration for our products, any problem determination and solving as well providing training and contribution in customer projects.



### [Wilson Rains - GT Software](#)

Mr. Wilson Rains serves as Vice President of Mainframe Software Solutions and Alliances at GT Software, Inc. Wilson is responsible for driving sales of GT Software productivity and integration solutions to enterprise organizations worldwide. He is also in charge of cultivating and managing partnerships to expand the implementation footprint of GT Software mainframe integration and data access solutions globally. Mr. Rains joined GT Software in 2004, and brings more than 20 years of business development experience to his role. Prior to joining GT Software, he led sales and business development posts at Jacada, ClientSoft and IBM.

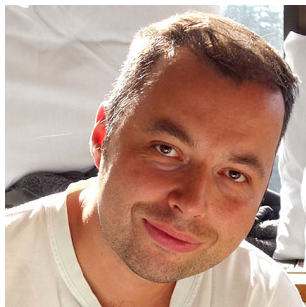


## IBM & Partner Speakers



### Barry Baker – Director IMS

Barry Baker was named IMS Director in February 2014. Barry started his career with IBM as an Assembler Programmer working on TPF in Poughkeepsie. He stayed with TPF for 8 years as a software engineer, development manager, test and service manager, and product manager. He was part of the Pure Systems team in a Marketing role, and prior to his appointment as IMS Director, he was the Technical Assistant to Beth Smith, former IMS Director and now General Manager of Information Management for IBM.



### Evgeni Liakhovich – IMS Software Support Engineer

Evgeni Liakhovich is an Advisory Software Engineer and has been with IBM for 15 years. In 2006 he joined IMS team as a support engineer for eBusiness onDemand products. He always had great interest in IMS modernization and in 2008 he joined IMS SOA team. He has created IMS educational material and presented at customer seminars and road shows. He is also the lead developer of the IMS .NET Data Provider.



### Kyle Charlet - IMS STSM

Kyle is a z Systems architect responsible for the cloud, mobile, analytics, and UI strategies in IMS. He also owns the architecture and roadmap for the IMS application and database modernization strategy. He has worked in IMS for over 15 years providing enterprise integration capabilities for IMS, standards-based application frameworks, Java compatibility, and both distributed and z Systems access to IMS.



### Alison Coughtrie – IT Specialist, European IMS Architecture Team

Alison, Certified IT Specialist is a member of the newly formed European IMS Architecture Team. Alison has specialized in IMS over the past 25 years both as an IMS customer as well as within IBM. She is a regular presenter at IMS conferences, GSE and seminars particularly focusing on new IMS features and their implementation.

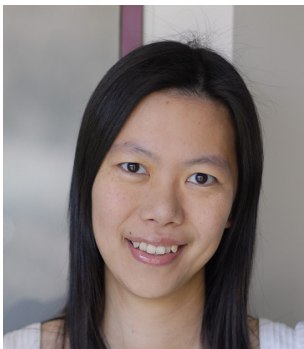


## IBM & Partner Speakers



### [Deepak Kohli – Senior Software Engineer, IMS Modernization and SOA Enablement](#)

Deepak is a Senior Software Engineer at IBM's Silicon Valley lab. Currently, he is part of the IMS Product management team helping customers modernize & SOA enable their IMS systems. Deepak also provides IMS Level 2 technical support specializing in IMS On-Demand and TM areas. He has a Masters in Computer Science from NYU. In the area of IMS, Deepak's experience ranges in applications, DBA, Systems, performance tuning and problem determination. He has taught various IMS & DB2 courses. His presentations have won him rave reviews at conferences world wide.



### [Haley Fung – Senior Software Engineer, IMS SOA Technical Lead](#)

Haley is a Senior Software Engineer. She is currently the SOA technical and development lead in IMS with over 13 years of solid experience in developing solutions for SOA, modernization, enterprise application integration and connectivity for IMS. Haley is a frequent presenter at global technical conferences. Her deep technical expertise and her passion and dedication for customer have helped many IMS customers to modernize and enhance their application infrastructures.



### [Helene Lyon – IBM Distinguished Engineer, EIAT Team Leader](#)

Helene is an IBM Distinguished Engineer, Technical Executive of the European IMS Architecture team whose focus is to develop database and transaction management solutions that fully integrate and collaborate with existing IT systems in order to perform a business function. Her focus is the "right fit" positioning of the IMS database manager and transaction manager capabilities within those systems.



### [Walter Klaey – Senior IT Specialist - European IMS Architecture Team](#)

Walter, Senior IT Specialist, is a member of the European IMS Architecture Team. He has 25 years system programming experience in IMS and z/OS on the System z platform for various customers and within IBM. He currently working for the zStack in Alps (Austria & Switzerland) focusing on new features and workloads on System z as well as on IMS.



## IBM & Partner Speakers



### **Richard Tran – IMS Senior Software Engineer, IMS Open Database Lead**

Richard is the IMS Open Database lead responsible for opening external access to your IMS data. He's worked on several integration projects to allow IMS access from various analytic and service based tools as IBM Cognos, IBM WebSphere DataPower, IBM BigInsights and IBM Watson Explorer.



### **Greg Vance – IMS Senior Software Engineer**

Greg is a Senior Software Engineer in the IMS development organization. He has worked for 24 years in the IMS organization in the database and Remote Site Recovery and DBRC areas. Most recently he was the lead architect for Infosphere IMS Replication for z/OS.



### **Isabelle Bruneel - Technical Sales and Solutions IMS and IMS Tools**

Isabelle Bruneel is a System z middleware techsales in France focused on IMS. Her expertise is recognized by the IMS European eco-system around IMS Tools and IMS system. She is also managing the IMS demo center hosted in IBM Montpellier.



### **Rosemary Galvan – IMS Tools SME, Rocket Software - IBM Strategic Business Partner**

Rosemary Galvan recently joined Rocket Software as an IMS product specialist but has worked with IMS for over 30 years. Prior to joining Rocket Software, Rosemary was an IMS Software Consultant for over 19 years and for an additional 15 years worked as an IMS DBA for several Fortune 500 companies.





## IBM & Partner Speakers



### Janet LeBlanc – IMS Tools Strategist and Architect

Janet LeBlanc is the IMS Tools Product Manager. Janet is responsible for the Technical IMS Tools training, competitive analysis, and customer technical sessions at conferences, road shows and on teleconferences. Janet has worked with IBM's IMS Tools since 1999 in technical sales and development sales support. Prior to joining IBM, Janet has worked with DB Tools as a vendor and a customer, and a DBA in the defense industries. Janet has been involved on the mainframe for over 35 years and with IMS and IMS Tools for over 25 years as a customer, vendor and IBMer.



### Suzie Wendler – Consulting IT Specialist, IBM IMS zGrowth Team

Over the past several years, Suzie's major responsibilities have included areas such as customer support, critical situation analyses, IMS Integration, and Connectivity projects. She has been involved in several onsite consulting projects including implementations of connectivity designs and Proofs of Technology. Additionally, she has presented at several User Groups, including Share and the IMS regional user groups; has been involved in IBM-sponsored activities such as technical seminars and roadshows; and has provided both technical and teaching support for IMS hands-on workshops.



### Carl Farkas – Europe Pan IMT z WebSphere Consultant

Carl Farkas has been working in the IT industry for over 35 years and has held many different jobs in a variety of technical areas. Carl has been concentrating on communications, messaging and application integration for the past 20 years and has authored several books on host integration and networking. More recently, Carl has been performing technical consulting for the IBM WebSphere products primarily on the IBM z Systems platform. Carl is now leading the IBM Europe zWebSphere technical sales team. He specializes in the WebSphere Application Server, WebSphere MQ product, the IBM Integration Bus and related products, and he has developed numerous education classes in these areas which he has taught throughout Europe.



### Andy Nguyen – IMS Tools SME, Rocket Software - IBM Strategic Business Partner

Andy Nguyen is a software engineer at Rocket Software. With 13 years of experience on the z/OS platform, Andy is the lead developer responsible for planning, designing, and developing the IBM IMS Sysplex Manager, IBM IMS Generic Exits, and IBM IMS Tools Online System Interface. Besides owning those core components, Andy has also developed the Auto Discovery feature of the Autonomics Director and contributed to the IBM Management Console. Prior to working on IBM's IMS Tools, Andy was a Level2 support specialist for IBM's z/OS DFSMS component with a primary focus on supporting VSAM Record Level Sharing and Transactional VSAM products.



## IBM & Partner Speakers



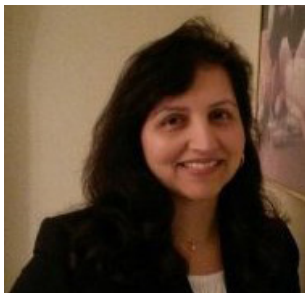
### Ron Biceglia – IMS Tools SME, Rocket Software - IBM Strategic Business Partner

Ron Biceglia is a lead software developer for Rocket Software and is based in Houston, TX, USA. He has worked with IMS for over 24 years and for the past 20 years has been involved in the design, development, and support of a range of IMS tools. He has been involved in the development of database reorganization utilities, data propagation tools, database monitoring and analysis solutions, data replication and backup and recovery products.



### Denis Gaebler – IMS IT Specialist

Denis is IMS IT Specialist for IBM since 1997 and works as Techn. Sales Information Management for the areas of IMS/TM & DB, IMS/Connect, Connectivity and New Application Architecture for System z including Websphere/z and Linux/z, Applications Architecture System z and z/OS, IMS Java and many more. He also has skills in DB2, TSO, SMP/E, RACF, ISPF, Apache, BEA & Tomcat, WebSphere/MQ, SOA, RAD and RD/z.



### Poonam Chitale – IMS Product Manager IBM

Poonam started her career in 1995 when she joined Autodesk as software engineer. She had been working for Rational Software since 1998 and joined IBM when Rational Software was sold to IBM in 2003. Poonam worked within IBM for several departments and joined the IMS team in 2015. She has experience and skills in the areas of software developing and testing, Cognos and cloud computing.



### Klaus Schunk – Technical Sales Professional - IBM Tivoli

Klaus is a German Advisory Technical Sales Professional from Dusseldorf who has 30 years of experience with the IBM System z at customers, ISVs and IBM. He has worked in system programming, administration, automation, monitoring and capacity planning on z/OS, z/VM and z/VSE. For over 18 years his focus has been on IBM System z System Automation and IBM System z monitoring software called IBM Tivoli OMEGAMON.



## IBM & Partner Speakers



### [Thomas J. Hubbard – IMS Tools SME, Rocket Software – IBM Strategic Business Partner](#)

Thomas Hubbard is a Product Specialist Manager for Rocket Software Inc., based in Houston, Texas. He has 35 years of experience in the information technology field. His areas of expertise include both DB2 and IMS backup and recovery planning. He also has extensive experience with system administration and performance management.



### [Chris Backhouse – IBM Operational Decision Manager for z/OS](#)

Chris currently is an architect in the WebSphere Operational Decision Management team focused on the technical strategy and requirements for the rules on System z offerings and integration with IBM's connectivity portfolio. Chris joined this team from the CICS development organisation where he was part of the business event processing and Web services team focusing particularly on Eclipse tooling and cross product integration.



### [Udo Hertz – Director of IBM z Analytics Accelerator and Tools Development](#)

As Director of IBM z Analytics Accelerator and Tools Development, Udo Hertz is responsible for the global development of analytics technologies and data management tools for the mainframe. Furthermore, Udo is development executive for the IBM Analytics labs in Europe. He has been responsible for the development of IBM DB2 optimized for SAP, IBM DB2 Analytics Accelerators, IBM Cloud Service dashDB and Spark, IBM InfoSphere Streams solutions and IBM Social Media Analytics. Prior to his current role Udo had been leading the development of z Systems Software in Germany and had ported Linux to the mainframe. Udo Hertz started his career with IBM as a systemsprogrammer for the mainframe in 1983.



### [Timm Zimmermann – IMS Tools SME, Rocket Software – IBM Strategic Business Partner](#)

Timm Zimmermann is a Database Tools Technical Advisor with Rocket Software. In his previous role he has been an IBM Software Developer and a member of the DB2 for z/OS Development SWAT team. In this role, he consults for worldwide customers on a variety of technical topics, including implementation and migration, design for high performance and availability, performance and tuning, system health checks, disaster recovery. Prior to this role, Timm was a DB2 Engine developer, with extensive knowledge and experience with DB2 Real-Time Statistics and DB2 Utilities.



## IBM & Partner Speakers



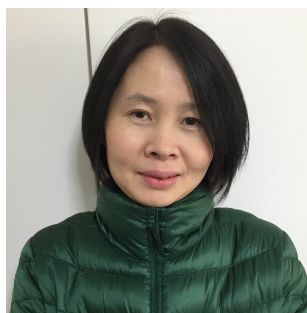
**Alen Wlmsley – IMS Tools SME, Fundi Software Pty Ltd. - IBM Strategic Business Partner**

Alan Walmsley is a project manager with Fundi Software. His responsibilities include the IMS tools in the IMS Performance Solution Pack he has specialised in IMS Connect Extensions for the last 10 years. Prior to working at Fundi, Alan worked as a CICS, DB2 and IMS application developer in the financial industry.



**Rafael Avigad – IMS Tools SME, Fundi Software Pty Ltd. - IBM Strategic Business Partner**

Rafael Avigad is a product manager with Fundi Software and regular speaker at IMS conferences in Australia. He is a contributor to IBM Redbooks and articles covering performance, modernization, and connectivity topics for IMS. Prior to joining Fundi, Rafael worked on operational support systems for mobile telephony and internet providers.



**Jie Ding – IMS Tools SME, Rocket Software – IBM Strategic Business Partner**

Jie Ding is an advisory software engineer at the Rocket Software IMS Tools Development Laboratory located in Japan. Since she started her career with IBM Japan in 1999, she has been involved in the development of IMS related database tools products. Jie joined Rocket Software in 2015, she is leading the design and development of IBM IMS Fast Path Solution Pack product.



## IBM IMS Symposium ORG TEAM



**Sandy Sherrill – IMS Worldwide Market Manager**

Sandy Sherrill is the IMS Worldwide Market Manager and is located at IBM Silicon Valley Lab. She has spent most of her IBM 25+ year career in and around IMS, as an information developer, manager, release coordinator, Program Manager, and more. She loves to meet customers and hear their stories, find new and innovative ways to share those stories with even more people, and act as an IMS Ambassador whenever she can.



**Denis Gaebler – IMS IT Specialist**

Denis is IMS IT Sepcialist for IBM since 1997 and works as Techn. Sales Information Management for the areas of IMS/TM & DB, IMS/Connect, Connectivity and New Application Architecture for System z including Websphere/z and Linux/z, Applications Architecture System z and z/OS, IMS Java and many more. He also has skills in DB2, TSO, SMP/E, RACF, ISPF, Apache, BEA & Tomcat, WebSphere/MQ, SOA, RAD and RD/z.



**Sandy Flippen – IBM IMS and DB2 Tools Program Manager**

Sandy Flippen is a member of the IBM IMS and DB2 Tools groups. Sandy has been involved in the analysis, verification, and balancing of business controls within the groups. Sandy has over 20 years experience with financial management activities. Sandy is currently the Information Management Royalty Process Owner.



**Thomas Esser – Senior Technical Sales Professional, Europe IMS SWAT Member**

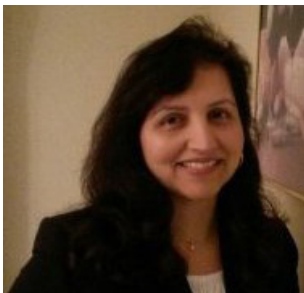
Thomas Esser is a Senior IT Specialist in the European IMS Architecture team. He has specialized in IMS and IMS Tools over the past 25 years, both as an IMS customer and within IBM and other vendors. Thomas is a regular presenter at GSE and University/High-schools, particularly focusing on new IMS and IMS Tools features and their implementation.





#### **Henry Kiesslich – IT Specialist, KIESSLICH CONSULTING**

Recognized as a key IMS Technical Support Specialist in Germany and Europe, Henry was part of the IBM IMS team for 14 years. As an IBM employee he spent most of his time working on-site with customers. Typical projects he was involved have been modernize their mainframe data centers, provide high availability services for key business applications and set up their environments to exploit Parallel Sysplex® features. Since 2013 he runs his own business providing IMS services and trainings.



#### **Poonam Chitale – IMS Product Manager IBM**

Poonam started her career in 1995 when she joined Autodesk as software engineer. She had been working for Rational Software since 1998 and joined IBM when Rational Software was sold to IBM in 2003. Poonam worked within IBM for several departments and joined the IMS team in 2015. She has experience and skills in the areas of software developing and testing, Cognos and cloud computing.



## Be sure to visit our Exhibitors and Sponsors in the Expo :

<b>Monday</b>	15:30 - 21:00
<b>Tuesday</b>	08:30 - 18:30
<b>Wednesday</b>	08:30 - 19:30
<b>Thursday</b>	08:30 - 12:30





Fundi Software develops system software for IBM z/OS, specializing in tools for CICS and IMS. Software developed by Fundi is distributed by IBM and used by many Global 2000 enterprises. IBM products developed by Fundi include the industry benchmark CICS Performance Analyzer and IMS Performance Analyzer.

Established in 1982, Fundi is an Australian company with headquarters in Perth (Western Australia) and development teams distributed between Australia and the United States.

For additional information visit:

[www.fundi.com](http://www.fundi.com)



InSoft-Infotel-Software is a software development, training and consulting firm specializing in data performance and optimization solutions. With more than 1 400 licenses in 48 countries, InSoft-Infotel-Software delivers proven solutions to help clients improve their data management systems. InSoft-Infotel-Software GmbH is a division of Infotel Group in charge of software sales activity. Infotel Group develops its expertise around two complementary poles: computer services and software editing. With € 175 million turnover in 2015 Infotel has a staff of over 1,900.

[www.infotel.com](http://www.infotel.com)

[www.insoft-software.de](http://www.insoft-software.de)







BMC provides solutions for the IT and big data companies worldwide. We transform digital enterprises for the ultimate competitive business advantage. 82% of the Fortune 500 rely on BMC for innovative and industrialized IT solutions.

We develop products and services that address six principles of digital transformation - for Intuitive User Experience , Adaptive Automation, Actionable Intelligence, Optimized Infrastructure & Cost, as well for Agile Applications and Compliance & Risk Mitigation. Our high speed innovative IT and high performance industrialized IT solutions include Service Management, Operations Management, Cloud Computing and Workload Automation across all platforms with a strong focus on Mainframe.

[www.bmc.com](http://www.bmc.com)



CA Technologies (NASDAQ: CA) provides IT management solutions that help customers manage and secure complex IT environments to support agile business services. Organizations leverage CA Technologies software and SaaS solutions to accelerate innovation, transform infrastructure and secure data and identities, from the data center to the cloud. Learn more about CA Technologies at

[www.ca.com](http://www.ca.com)





GT Software, Inc. designs and develops mainframe solutions for the information technology infrastructure. Its products include enVue Data, Virtualization, Ivory Integration, and Net-COBOL. The company has strategic partnerships with Fujitsu, IBM, Computer Associates, Oracle, Red Hat, Microsoft, and Mainline. It caters to banks, financial institutions, insurance companies, state and local governments, and retail, manufacturing, and energy companies. GT Software, Inc. was founded in 1980 and is headquartered in Atlanta, Georgia.

[www.gtsoftware.com](http://www.gtsoftware.com)



Compuware Corporation is an American software company with products aimed at the information technology (IT) departments of large businesses. The company's services also include testing, development, automation, and performance management software for programs running on mainframe computer systems. The company has its headquarters in Downtown Detroit, Michigan.

In December 2014, Compuware was acquired by private equity firm Thoma Bravo and became a privately held company.

[www.compuware.com](http://www.compuware.com)





Rocket Software is a privately held software development firm with business and technology partnerships with IBM, EMC, Fujitsu, HP Enterprise Services, Hitachi Data Systems, and others. The company has more than 1200 employees, and is headquartered in Waltham, Massachusetts, USA.

Since 2014 the partnership with IBM is expanding the scope to include all components of database and system management tools in the area of IMS, DB2 and others.

Rocket Software is now a premier IBM Strategic Business Partner.

[www.rocketsoftware.com](http://www.rocketsoftware.com)



# Don't miss our Evening Events



Dear guests,

it's our pleasure to invite you to our evening events!

Join us to celebrate our traditional IMS Symposium 2016 and enjoy delicious food & drinks and all our company within the IMS family. Tuesday, 7:30 pm, we will meet at the reception to enter a coach for a short drive.

Wednesday night we invite you for our fine dine at the Hotel restaurant starting at 7:30 pm.



## How to Download Presentations after the IMS Symposium

Go to the website

[www.kieco.de](http://www.kieco.de) or straight to

<https://kiesslich-consulting.de/events/sessions2016>

The presentations will be available there the following day.



# Keep going...

Sharpen your competitive edge



## 2016 IMS Technical Symposium

March 7 - 10, 2016

Wiesbaden, Germany

[www.ims-symposium.com](http://www.ims-symposium.com)

## IMS Technical Symposium 2015



## IMS Technical Symposium 2014



**A smarter planet starts with you...**

Enhance your skills with IBM Technical Conferences



***SAVE THE DATE***

***for the next conference  
in the week of March 6 to March 10  
in 2017***

*Location  
yet to be determined*

